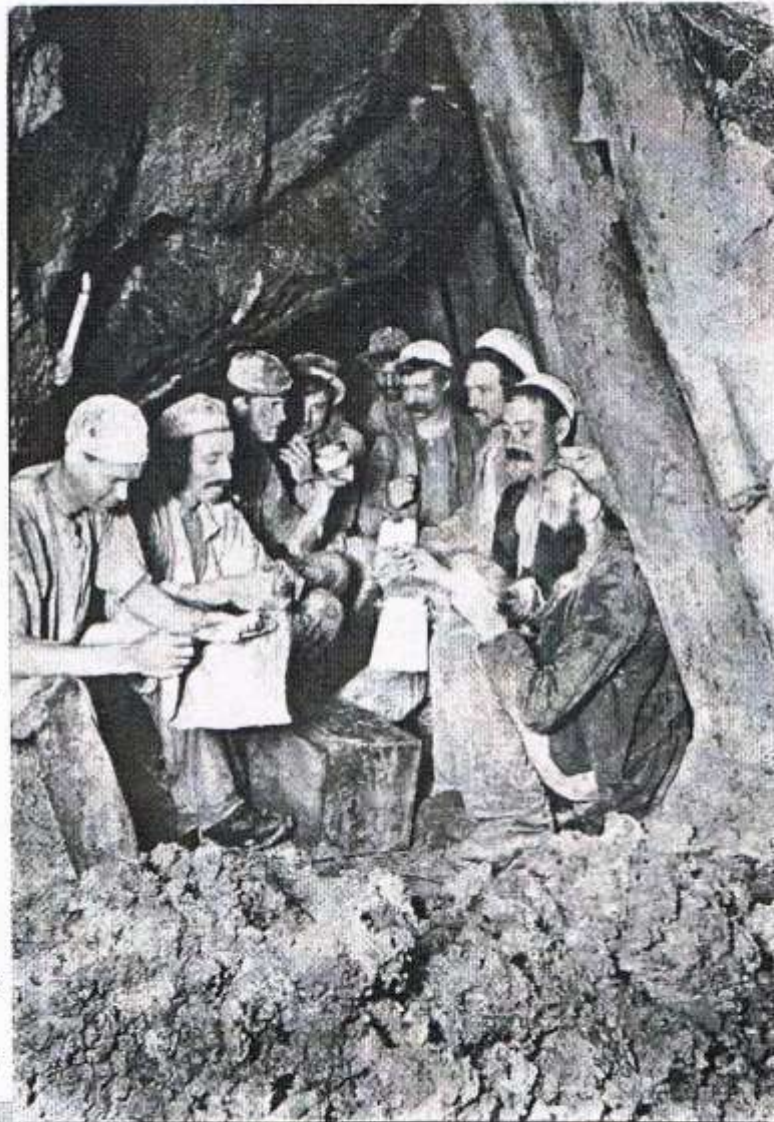


We have to thank Lud Sparks of Paeroa, J.R. Scutt of London and Simon Crawford of Wellington for the illustrations on this page. When I published a small follow up piece in the last *Postcard Pillar* to the effect that I'd received a nil response to my inquiry regarding our cover picture for issue no.57 which featured two shifts of workers posed over the mine shaft of the *Welcome Mine* at Waihi, I obviously set off a depth charge in the minds of our readership. All this brought to light that Beattie was the photographer who made this photograph and he did use it for a postcard. Lud Sparks even went on to point out that there were two different versions of this scene. As readers will notice there are certain movements of the men on the shaft between exposures. When Alan Jackson saw these along with Beattie's study of miners allegedly 1,000 feet below the surface of the earth having a meal break, he jocularly suggested that this was the scene which greeted your editor as he descended to the bowels of

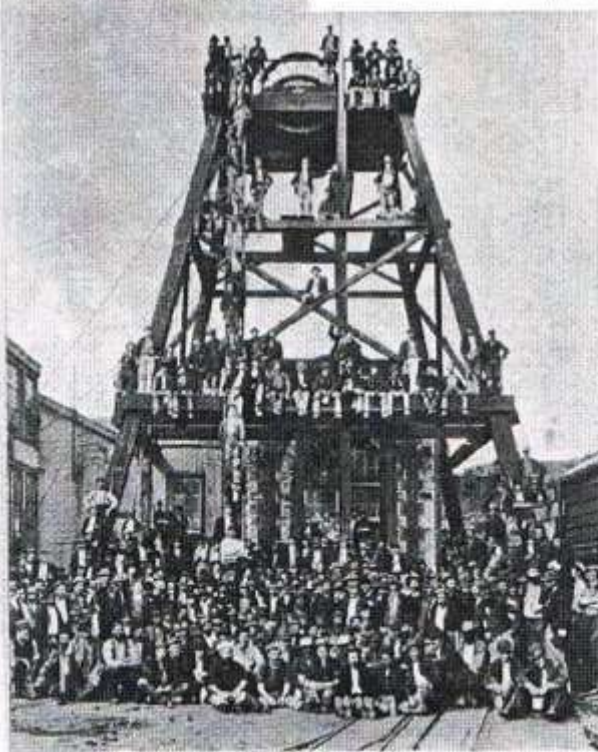


the earth to find new and interesting articles to publish in the *Postcard Pillar*. This suggestion has left me with the thought that it might encourage our readers to send in alternative captions to postcards which we publish. So put your thinking caps on and get your entries into us as soon as possible. The prize for the best alternative caption for the illustration on the left will be a set of *Exposures* post-cards c.1985 which I produced when I was in business in Wellington in the 1980s. They feature a number of views made by George Pye Crombie and William Permin, both of whom hailed from Dunedin and were prominent in amateur photographic circles during the first two decades of the 20th century. For an alternative caption, turn to page 19.

W. Beattie & Co., Publishers.

Auckland, N.Z.

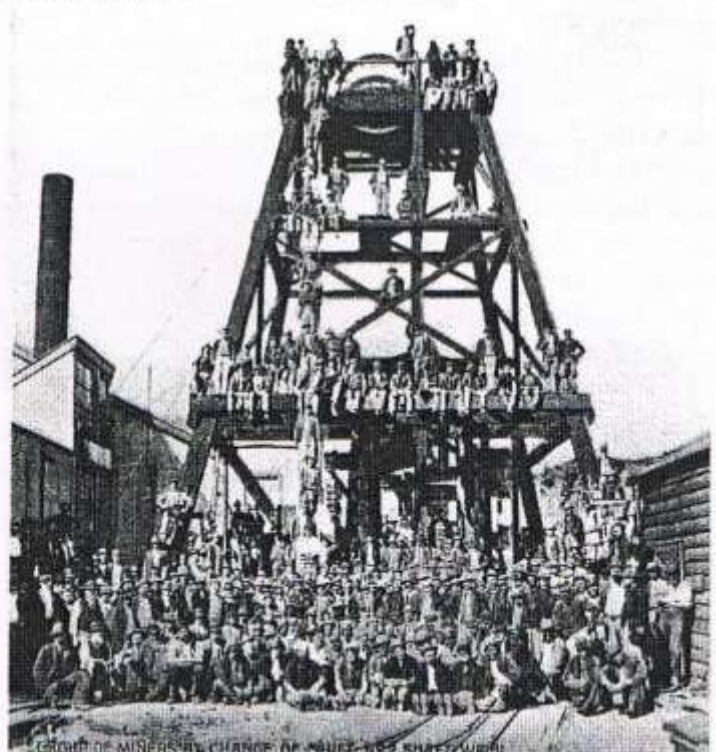
1,000 feet below the surface.



W. Beattie & Co.

The Welcome Shaft and Two Shifts.  
Waihi G.M. Co.

Auckland, N.Z.



GROUP OF MINERS IN CHARGE OF SHIFT-1922 SHIFTS WAIHI  
GOLD MINING CO. WAIHI

Nº 128



A) MAIN PRINTED SERIES

6	Mt. Eden (showing Maori Fortifications), Auckland [2]	118	The Thames River at Paeroa, showing Wharf [2]
7	[Still unidentified. In issue No.57, '7' should read '17']	122	The Bridge, Paeroa [1, 2]
13	Poi Dance [2]	127	Desolation around Waimangu [1,2,3]
17	The Auckland Landmark [2,3]	148	The Junction Wharf Paeroa, Thames River, N.Z. [3] [- see illn. #14, p.9 no.57]
19	Soaping Wairoa Geyser [1,2; later R.10][see illn.#6 p.8 No.57]	152	ROUND THE WORLD IN A CANOE - THE CANOE-YACHT "TILIKUM" LEAVING AUCKLAND FOR LONDON, ENGLAND [3]
21	Lake Takapuna [2,3]	156	HOW NEW ZEALAND CHILDREN GO TO SCHOOL [3]
23	Auckland Harbour, from Princes Street [2,3; later A.9 & 6007]	159	END OF THE PENNY SECTION SYMONDS ST., AUCKLAND, N.Z. [3]
24	New Bath House and Sanatorium Grounds, Rotorua [3]	160	THE OPENING OF THE BOWLING SEASON, ROTORUA, N.Z.[3]
26	One Tree Hill from Mt. Eden [1,2]	163	KING EDWARD'S THRONE, ALEXANDRA GROTTO, RUAKURI CAVES, WAITOMO, N.Z. [3]
29	War Canoe [2,3]	164	THE WEDDING CAKE, BRIDAL GROTTO, RUAKURI CAVES, WAITOMO, N.Z. [3]
31	The Malfroy Geyser & Government Sanatorium, Rotorua[2,3] [Note: In the "Moa Series" version, 2 <u>different</u> views were published with this title; in the replacement view, there is no woman in the centre of the shot.]	167	THE ENTRANCE, RUAKURI CAVES, WAITOMO, N.Z. [3]
34	Okaroire [2]	170	THE GOVERNMENT ACCOMMODATION HOUSE, WAITOMO, N.Z. [3] [Note: A new building was erected in 1912, - see the RP card on p.12 no.58]
35	"Sunshine and Shower" [1,2] [Note: Maori woman carrying child on back]	171	A MAORI GIRL N.Z. [3]
36	Throw a Penny [2,3; later R.7, 6005 [- see illn.#4, p.8 no.57]	177	CAVE AND WATERFALL ABOVE PIPIRIKI, WANGANUI RIVER, N.Z. [3]
37	Pink Terrace [2,3]	178	WATERFALL ABOVE PIPIRIKI, WANGANUI RIVER N.Z. [3]
39	Trolling on Lake Rotorua [2]	184	AUCKLAND FROM PRINCES ST. N.Z. [3]
41	Lake Tarawera [2,3]	185	NATIVE BUSH SCENERY ON THE BANKS OF THE WANGANUI RIVER N.Z. [3]
46	Wairoa Geyser in action, Whakarewarewa [2,3] [Note: Identical view to #59, so one numbered in error?]	303	DUNEDIN N.Z. PANORAMIC VIEW FROM TOWN HALL CLOCK, GEORGE STREET IN FOREGROUND [3]
50	The Twins and Inferno, Tikitere, Rotorua [2,3; later 5098]	304	DUNEDIN PANORAMIC VIEW FROM TOWN HALL CLOCK [3]
51	At Ohinemutu, Rotorua [1,2,3]	308	KNOX CHURCH, GEORGE STREET DUNEDIN N.Z. [3]
52	"Through Steaming Hills and Boiling Water", Lake Rotomahana, Rotorua [1,2; later 6003]	316	THE TELEGRAPH OFFICE, SHOWING HIGH STREET IN THE DISTANCE, DUNEDIN [3]
53	Sophia, of Tarawera Fame [1,2; later B.8] [- see illn. #23, p.10, no.57]	317	THE BOYS' HIGH SCHOOL, DUNEDIN N.Z. SHOWING CITY AND HOSPITAL [3]
58	The Interior, St. Matthew's Church, looking East [2]	320	THE RAILWAY STATION DUNEDIN N.Z. [3]
59	Wairoa Geyser in action, Whakarewarewa [2]	326	SALT WATER BATHS, OCEAN BEACH ST. CLAIR DUNEDIN N.Z.[3]
61	Maggie Papakura, Guide at Whakarewarewa [1,2,3]	332	PANORAMIC VIEW OF INVERCARGILL N.Z. FROM TOWER OF POST OFFICE [3]
62	Maori Chief, Patara Te Tuhi [1,2] [- see illn. #25 p.10 no.57]	333	PANORAMIC VIEW OF INVERCARGILL N.Z. FROM TOWER OF POST OFFICE, SHOWING BANKS AND ROMAN CATHOLIC CATHEDRAL [3]
64	St. Andrew's Church, showing Hospital and Mt.Eden [2]	334	Title as #332 but different scene [3]
66	The Main Street, Waihi, showing Martha Hill on left [3]	335	DUNEDIN N.Z. PANORAMIC VIEW FROM TOWN HALL CLOCK SHOWING HARBOUR ETC. [3]
67	Early Morning Bath, Whakarewarewa [2]	338	DUNEDIN N.Z. PANORAMIC VIEW SHOWING ST. CLAIR AND OCEAN BEACH [3]
70	Hopper of No.1 Shaft, Waihi G.M.Co.[1,3] [Note: This image was reproduced in the <i>Weekly News</i> , 30 June 1904]	339	[The view shown as #338" on p.7 of no.57 should be "339"] THE FIRST CHURCH, MORAY PLACE, DUNEDIN N.Z. [3]
71	A Maori Tangi [1,2] [- see illn. #2, p.8, no.57]	340	MANAKAU HARBOUR BY MOONLIGHT SHOWING THE HEADS FROM MANGERE MOUNTAIN [3]
72	'The Torpedo', Whakarewarewa [1, 2; later R.6]	342	MANGERE MOUNTAIN FROM BRIDGE, ONEHUNGA [2] [Note: #342, 343, 347, 348 have now been seen in version 2, the only images above #136 seen in other that the "Moa" series. The other views in this Onehunga series #340-350 probably also exist in both versions].
74	The Late Maori King, Tawhio [3]	343	GENERAL VIEW OF ONEHUNGA FROM MANGERE MOUNTAIN [2,3]
77	Lake Rotomahana, showing Rift in Mt. Tarawera from Waimangu [1,2,3] [Note: A <u>different</u> scene,taken from approximately the same spot,was published in version 3, with the title "MT. TARAWERA & LAKE ROTOMAHANA FROM WAIMANGU N.Z."]	348	THE R.C.CHURCH OF THE ASSUMPTION, ONEHUNGA [2]
79	Lower Queen Street, Auckland [1,2]	350	ONEHUNGA N.Z. LOOKING TOWARDS MANGERE [3]
82	Terrace Formation, Waiotapu [2]	360	THE STRAND JUNCTION BATTERY FROM SHAFT HEAD,WAIHI [3]
83	Crow's Nest Geyser (quiescent), the Spa, Taupo [2,3]	362	NO.2 SHAFT & BATTERY IN DISTANCE,WAIHI G.M.CO.WAIHI [3]
86	Maungakakamea, the Rainbow Mountain, near Waiotapu [2]	369	DISTANT VIEW OF WAIHI SHOWING RECREATION GROUND FROM WAIHI G.M.CO'S BATTERY [3]
91	The Echo Lake, Waiotapu	371	BRIDGE AT PAEROA [3]
92	The Alum Cliffs and Coloured Pools, Waiotapu [2,3; later B.7]	373	A PRETTY BEND ON THE WAIKINO ROAD SHOWING RAILWAY BRIDGE [3]
94	The Orifice of the Great Wairakei Geyser [2]	374	WAIKINO RAILWAY STATION [3]
95	Crow's Nest Geyser in action, the Spa, Taupo. Plays with clock-like precision every 20 minutes. [2]	377	NO.3 PANORAMIC VIEW PAEROA SHOWING RECREATION GROUNDS [3]
97	The Cricket Ground, Auckland showing Hospital in back ground [2]	389	HUNUA FALLS NEAR AUCKLAND N.Z. [3]
100	Corner Karangahape Road and Pitt Street, showing Pitt Street Church. [2]		
109	The Waikato River at Ngaruawahia [2,3; later B.14]		
111	[Apart from the view listed on p.7 of no.57, there is another image with apparently seriffed "111" and titled "Waimangu Geyser". This exists in versions 1, 2 and 3. Version 1 bears an index of "3021". Versions 1&2 both have "Protected 20.11 1903", the copyright date of this version of the Geyser in eruption. The apparent "111" in version 2 may be a distorted version of another number].		
112	Constitution Hill, showing St. Andrew's Church, Supreme Court, and University Buildings, Auckland [2]		
116	The Kingsland Tram Terminus [2]		



B) REAL PHOTO CARDS

(arranged in chronological order)

1. 3. 1908 MATAROA RAILWAY STATION [B-type back]  
 1. 5. 1908 BUSH SCENERY, NORTH ISLAND MAIN TRUNK RAILWAY - NEAR OHAKUNE[D] [Note: This is the same image as "RAIL HEAD OHAKUNE" listed p.8 no.58. As the railhead soon moved on, Beattie must have later altered the caption so as to make it appear not out of date.]  
 1. 7. 1908 MAIN ST. OHAKUNE [A]  
 1. 7. 1908 MT. RUAPEHU FROM WAIMARINO PLAINS[A]  
 ? . ? 1909 NO.2 THE MAIN ST. OHAKUNE[A][Note: Copyright date shown as "PROTECTED 1909". This is a different view from that copyrighted 1. 7. 1908]  
 1. 2. 1909 COACH CROSSING MANGAWHERO RIVER, OHAKUNE [A]  
 1. 9. 1909 POST & TELEGRAPH OFFICE, OHAKUNE - SHOWING MT. RUAPEHU[D]  
 1. 11. 1909 NO.7 GENERAL VIEW OF TAUMARUNUI FROM ONGARUI RIVER[C]  
 1. 3. 1910 NO.4 MORNING'S CATCH, 24 TROUT - WEIGHT 207 LBS. TOKAANU N.Z.[D]  
 1. 3. 1910 NO.5 A 17LB & 18LB RAINBOW TROUT, TOKAANU N.Z. [D]  
 1.10.1911 NO.4 POST OFFICE, MAIN ST. OPOTIKI  
 1.10.1911 NO.7 BRIDGE, WAIOWERA RIVER, OPOTIKI  
 1.10.1911 NO.15 CHURCH OF ST. STEPHEN THE MARTYR, OPOTIKI  
 1.11.1911 NO.102 CHURCH OF ST. STEPHEN THE MARTYRS, OPOTIKI [Note: Extra "S" in error]  
 1. 6. 1912 NO.101 QUEEN ST. LOOKING N., SHOWING POST OFFICE, AUCKLAND[C]  
 1. 7. 1912 VIEW FROM FERRY BLDG. SHOWING ALBERT PARK & MT. EDEN, AUCKLAND [plain back]  
 1. 9. 1912 NO.120. GREAT BLOW HOLE, WHITE ISLAND.[C]  
 1. 9. 1912 NO.121. THE BOILING LAKE & CRATER, WHITE ISLAND[C]  
 1. 9. 1912 NO.125. STREET, OPOTIKI  
 26.12.1913 ON THE ELLERSLIE RACE COURSE[C] [- crowds at racecourse meeting, possibly Boxing Day?]  
 1. 3. 1913 NO.10 NO.2 PANORAMIC VIEW OF AUCKLAND HARBOUR, SHOWING NORTHCOTE & NORTH SHORE FROM MR E. G. SKEATES RES., BIRKENHEAD[C] [Note: Intended to be viewed alongside "No.1" listed on p.8 No.58]  
 20. 5. 1913 POST OFFICE, HOTELS & BUSINESS HOUSES, TAIHAPE[C] [Note spelling error!]  
 1.12.1914 A TERROR TO THE TURKS - MAORI WARRIORS AT THE DARDANELLES - WAR CRY - "KAMATE KAMATE KAORA KAORA "[C] [Note: This is the only Beattie card recorded so far produced during World War One]

Three further cards without copyright date:

- 1) MAORI POI DANCERS ROTORUA[C]  
 2) A RELIC OF OLD AUCKLAND 1. 1.1900[C] [horse-drawn bus; this card must have been produced 1908 or later from a photo taken by Beattie around 1899-1900]  
 3) NO. 10. LAUNCH OF FIRST EIGHT OAR BOAT 22. 2.1908 AT AUCKLAND.[A] [unclear whether published at this time or later]

UNNUMBERED COROMANDEL PENINSULA CARDS [VERSION 1]

- (1) General View, Karangahake  
 (2) Lower Karangahake  
 (3) Post and Telegraph Office, Karangahake

- (4) Entrance to Railway Tunnel and Crown Battery, Karangahake  
 (5) The Talisman Battery, Karangahake  
 (6) ROSEMONT STREET, WAIHI [Note: The caption is on a wide uncoloured band at the bottom of the card, with a clear line separating it from the view, - an unusual format for Beattie.]  
 (7) Main Street, Waihi, looking towards Karangahake  
 (8) The Hospital, Waihi  
 (9) The Cutting, Martha Hill, Waihi  
 (10) Junction Mine and Suburbs, Waihi  
 (11) The Waihi G. M. Co.'s Property, showing No.2 Shaft and Pumping Shaft.  
 (12) The Welcome Shaft and Two Shifts, Waihi G. M. Co.  
 (13) 1,000 feet below the surface [Note: Group of miners underground during meal break]  
 (14) General View, Waikino  
 (15) The Waikino "Express" [Note: Carts drawn by 8 - horse teams]  
 (16) The Waikino Battery, Waihi G. M. Co.'s property  
 (17) Main Street, Paeroa

Note: Cards from this series have been seen postally used between September 1905 and February 1906. I would like to hear of any later versions with catalogue index number shown after the caption. A.J.

"A", "R" & "B" COLOURED "MOA" SERIES, PRINTED BY G.C.RÖDER, LEIPZIG

"A" SERIES WITH CAPTION IN WHITE CAPITALS ON THE IMAGE (RÖDER No.s 91714 to 91725 in sequence)

- A1 MOUNT EDEN AUCKLAND N.Z.  
 A2 VIEW OF AUCKLAND FROM MOUNT EDEN SHOWING NORTHSORE & RANGITOTO [same as #14?]  
 A3 UPPER QUEEN STREET, AUCKLAND N.Z.  
 A4 WELLESLEY STREET AUCKLAND N.Z. SHOWING MUNICIPAL BUILDINGS [same as #60(?) and 6002]  
 A5 TROOPERS' MEMORIAL ALBERT PARK, AUCKLAND N.Z. LORD RANFURLY IN FOREGROUND [same as #102]  
 A6 ALBERT PARK, AUCKLAND N.Z.  
 A7 ST. ANDREW'S CHURCH, SHOWING HOSPITAL AND MOUNT EDEN, AUCKLAND N.Z.  
 A8 THE PUBLIC HOSPITAL AND ANNEXES, AUCKLAND N.Z. [same as #114]  
 A9 THE HARBOUR FROM PRINCES STREET, AUCKLAND N.Z. [SAME AS #23?]  
 A10 REGATTA DAY, COWES BAY, WAIHEKE. A FAVORITE HOLIDAY RESORT NEAR AUCKLAND N.Z.  
 A11 LAKE TAKAPUNA AUCKLAND N.Z.[same as #21 ?]  
 A12 AUCKLAND WEST FROM NORTH SHORE, SHOWING AUSTRALASIAN SQUADRON IN HARBOUR.

"R" SERIES WITH CAPTION IN WHITE CAPITALS ON THE IMAGE (RÖDER No.s 91726 to 91737 in sequence)

- R1 EARLY MORNING, OHINEMUTU, LAKE ROTORUA N.Z.[the central part of this image was produced in the original black and white series as #2, a vertical format image]  
 R2 THE TROOPERS' MEMORIAL AND TEA HOUSE, SANATORIUM GROUNDS, ROTORUA N.Z.  
 R3 THE HAMURANA SPRINGS [same as #81?]  
 R4 MAORI COOKING OPERATIONS ROTORUA N.Z.  
 R5 THE TWINS AND INFERNO TIKITERE ROTORUA N.Z.[same as #50 ?]  
 R6 THE TORPEDO, WHAKAREWAREWA N.Z.  
 R7 THROW A PENNY [same as #36 and 6005]

(PRELIMINARY) W.B & CO. R.

Left: An example of the distinctive way Beattie signed his RP postcards. Note the squared 'o's.



- R.8 HAKA FOR A PENNY WHAKAREWAREWA N.Z. [same as #187]
- R9 THE BRAIN POT, - WHAKAREWAREWA N.Z. [same as #55]
- R10 SOAPING WAIROA GEYSER, - WHAKAREWAREWA N.Z. [same as #19]
- R11 WAIROA GEYSER IN ACTION [same as #59 ?]
- R12 DIVING FOR A PENNY.- WHAKAREWAREWA N.Z.[same as #43]

'B' SERIES WITH RED CAPTION PARTLY IN LOWER-CASE TYPE INSIDE UNCOLOURED BAND AT BOTTOM

- B1 Distant View of the Thames from Shortland Cemetery, N.Z.
- B2 General View of the Thames, N.Z. Looking towards Wharves
- B3/4 ?
- B5 Bird's Eye View Karangahake, Looking towards Paeroa, N.Z.
- B6 ?
- B7 The Alum Cliffs and coloured Pools Wai-o-tapu, N.Z. [same as #92?]
- B8 Guide Sophia of Tarawera Fame [same as #53]
- B9 Bella the Princess Whakarewarewa N.Z. [same as #76?]
- B10 A Maori Warrior
- B11 ?
- B12 Hongi Maori Salutation [same as #16?]
- B13 A Maori Wahine and Child
- B14 The Waikato River at Ngaruawahia, N.Z.
- B15 Lower Symonds Street Auckland N.Z.
- B16/17 ?
- B18 Waimangu Basin, N.Z. The Cross marks the scene of the Fatality. [Note: The caption apparently refers to a fatal volcanic eruption in the period 1906-7]

SPECIAL ADVERTISING COMMISSIONS

Simon Crawford has shown us 2 unnumbered cards which appear to have been produced as publicity cards for individual hotels in Auckland. These would presumably have been available free to guests at the respective establishments.

- 1) Printed monocolour card with 2 small views, captioned 'GRAND HOTEL, Princes Street, Auckland N.Z.' and 'View of Auckland Harbour from Grand Hotel', with space for address and stamp below, and blank back. Probably a very early Beattie card c.1904
  - 2) "CARGEN HOTEL, AUCKLAND" RP P/C, with view of hotel and harbour beyond. Divided back. Probably produced 1908 or later.
- I would be interested to hear of any other commercial advertising postcards produced by Beattie.

Top right: *Most fishermen today would be more than happy if they caught this lot in a season, but this was just a morning's catch in the summer of 1909 -10. Such catches were not untypical in N.Z. waters a hundred years ago, when there were plenty of fish, plenty of food for them, no pollution from surrounding farmland, and few fishermen. Another photo (copyrighted at the same time) of the same angler, holding two whoppers of 17lbs and 18lbs, was also produced as a postcard by Beattie.*

Bottom right: *At the time this card appeared (around 1903 - 04) Karangahaake on the Comomandel peninsula was a vibrant place. It had a considerable population, the majority of whom were involved in the booming gold-mining industry. Most of the gold here was obtained by crushing (in batteries) the quartz rock in which the gold and other valuable minerals were trapped. For some years, the mines in this area achieved huge returns. The precipitous nature of the country is indicated by the mine buildings clinging to the slopes behind the P.O., and especially by the small building on the hilltop in the centre of the photo. Without doubt, this would have been connected with the mining industry.*



Nº 4. MORNING'S CATCH, 24 TROUT - WEIGHT, 207 LBS. TAKAHU, N.Z. 1910. W. B. & Co., N.



W. Beattie & Co. Post and Telegraph Office Karangahake Auckland, N.Z.



## WILLIAM BEATTIE AND LOCAL PUBLISHERS by ALAN JACKSON



In the last issue of the journal (No.59, page 12) a 'real photo' type postcard was illustrated with the imprint of W.J.Newell, Opotiki. The unusual aspect of this card was that the handwritten caption was in the same idiosyncratic hand as on the real photo postcards of William Beattie. I think this distinctive handwriting (always in capital letters, - see No.59 page 10) was Beattie's own. So how do we explain his handwriting on a card published by someone else?

Beattie appears to have visited Opotiki around September 1911 to take a number of photos of the town for his own postcard series: on 1st October 1911, he copyrighted a run of around 18 views of the town. Several different cards from this series with numbers between "No.2" and "No.18" have been reported by local Opotiki collector, Isobel Nicol (see the accompanying update of the W. B. catalogue). Our man was back again around August 1912 because another Opotiki view is known copyrighted 1st September 1912, and on the same date, series of views of nearby Whakatane (3 known) and White Island (6 known) were copyrighted.

While he was in the area, Beattie no doubt visited local retail outlets and offered them the chance to stock his

up-to-the-minute views of the area. But he may also have offered local merchants access to his real photo postcard processing facilities in Auckland. In this way, they could issue their own local view cards under their own imprint. Newell apparently took up this offer. He either supplied his own photos or possibly purchased the rights to some that Beattie had taken of the area, and Beattie then printed them for him in Auckland (including writing the captions on the negatives).

Five different views of Opotiki are so far recorded in this Newell series printed by Beattie. These all have the characteristic Beattie-type rubber-stamped backs (Type C).

Another real photo card of Opotiki is known with caption hand-written by Beattie but apparently not published by him. This card, of the Masonic Hotel, is attributed to "THE STRAND SERIES". It also has a Beattie Type C back.

None of these Newell or Strand cards bears a copyright date in the caption. Perhaps the publishers were unworried about their views being subsequently reproduced by others?

Simon Crawford has shown us one other real photo postcard with Beattie's characteristic handwriting in the



caption but with someone else's imprint. This bears the imprint of F.S.Sutton, Te Kuiti (see below).

I would be most interested to hear of any other such cards with caption by Beattie but not published by him. I suspect there must be many others.

Isobel Nicols has shown us two later cards, with Newell's imprint, both views of Opape Beach, Opotiki. These, however, bear captions in a different hand, so were apparently processed by someone other than Beattie. They may well be from a much later date.

## CATALOGUE

### a) OPOTIKI REAL PHOTO POSTCARDS BY W.BEATTIE

- |             |       |  |
|-------------|-------|--|
| 1. 10. 1911 | NO.2  | RETURNING FROM SCHOOL, OPOTIKI               |
| 1. 10. 1911 | NO.4  | POST OFFICE, MAIN ST., OPOTIKI               |
| 1. 10. 1911 | NO.7  | BRIDGE, WAIOWERA RIVER, OPOTIKI              |
| 1. 10. 1911 | NO.8  | CHURCH ST. FROM N., OPOTIKI                  |
| 1. 10. 1911 | NO.9  | CHURCH ST. FROM S., OPOTIKI                  |
| 1. 10. 1911 | NO.10 | STRAND ARCADE, CHURCH ST., OPOTIKI           |
| 1. 10. 1911 | NO.11 | PANORAMIC VIEW OF OPOTIKI FROM SANDHILLS     |
| 1. 10. 1911 | NO.12 | PANORAMIC VIEW OF OPOTIKI FROM THE SANDHILLS |
| 1. 10. 1911 | NO.15 | CHURCH OF ST. STEPHEN THE MARTYR, OPOTIKI    |
| 1. 10. 1911 | NO.18 | AT OPOTIKI                                   |

[Note: Three of these, Nos. 4, 7, 15, were listed on p.10 PP No.59]

- |             |        |   |
|-------------|--------|---|
| 1. 11. 1911 | NO.100 | CHURCH OF ST. STEPHEN THE MARTYR, OPOTIKI<br>[reproduction of a historical view, apparently taken c.1870s, of a group of men standing in front of the church] |
| 1. 11. 1911 | NO.102 | CHURCH OF ST. STEPHEN THE MARTYRS, OPOTIKI<br>[same early period as NO.100; extra "S" in error; this view was listed on p.10 PP No.59]                        |
| 1. 5. 1912  | NO.104 | ROMAN CATHOLIC CHURCH & CONVENT, OPOTIKI  |
| 1. 10. 1912 | NO.106 | OPOTIKI FROM GOLF LINKS   |
| 1. 10. 1912 | NO.108 | S.S. NGATIWA LEAVING WHARF, OPOTIKI   |
| 1. 10. 1912 | NO.109 | EARLY MORNING RIVER SCENE, OPOTIKI  |
| 1. 9. 1912  | NO.125 | STREET, OPOTIKI   |

### b) WHAKATANE REAL PHOTO POSTCARDS BY W.BEATTIE

- |            |       |  |
|------------|-------|--|
| 1. 9. 1912 | NO.?? | WHAKATANE FROM THE HILLS SHOWING MT. EDGCOMBE            |
| 1. 9. 1912 | NO.10 | THE BAR, WHAKATANE                                       |
| 1. 9. 1912 | NO.11 | THE WATERFRONT, WHAKATANE, SHOWING OLD MAORI FIGHTING PA |

### c) WHITE ISLAND REAL PHOTO POSTCARDS BY W.BEATTIE

- |            |          |   |
|------------|----------|---|
| 1. 9. 1912 | NO.1     | THE CRATER & LAKE, WHITE ISLAND           |
| 1. 9. 1912 | NO.120   | GREAT BLOW HOLE, WHITE ISL.               |
| 1. 9. 1912 | NO.121   | THE BOILING LAKE AND CRATER, WHITE ISLAND |
| 1. 9. 1912 | NO.122   | STORM, WHITE ISL.                         |
| 1. 9. 1912 | NO.123   | THE GREAT BLOW HOLE, WHITE ISL.           |
| 1. 9. 1912 | [no NO.] | ACTIVE SULPHUR HOLE, WHITE ISLAND         |

### d) W. J. NEWELL - PUBLISHED REAL PHOTO POSTCARDS [PRINTED & CAPTIONED BY W. BEATTIE]

- NO.3\* CHURCH ST., OPOTIKI, LOOKING S.
- NO.5\* KING ST., OPOTIKI
- NO.6\* CHURCH ST., OPOTIKI
- NO.8\* CHURCH ST., OPOTIKI [different from No.6]
- NO.11\* FACTORY BRIDGE, WAIOTAHU [ "P" in error for "F" ]

### e) OPOTIKI REAL PHOTO POSTCARD PRINTED & CAPTIONED BY W. BEATTIE; NO PUBLISHER INDICATED \*\*THE STRAND SERIES. THE MASONIC HOTEL, OPOTIKI\*\*

### f) F. S. SUTTON - PUBLISHED REAL PHOTO POSTCARD [PRINTED & CAPTIONED BY W. BEATTIE] \*\*CARVED MAORI HOUSE, TE KUITI. F. S. SUTTON, TE KUITI\*\*



## THE POSTCARDS OF WILLIAM BEATTIE - PART 5

Thanks are due to Simon Crawford, Tony Edwards, Bill Main, John Scutt and Trev Terry for the following substantial list of additions to the catalogue of views which was previously published in issues Nos.57-60 of *THE POSTCARD PILLAR*.

### A. MAIN PRINTED SERIES

(types in brackets: 1 = early B&W series without number; 2 = early B&W with number; 3 = later "Moa" series (coloured or B&W))

1. In the Albert Park, Auckland (2)
3. The Porridge Pot, Whakarewarewa, Rotorua (3)
7. Parnell from Supreme Court (2) (replaces No.7 in original list, which was actually No.17)
22. Auckland, from Windmill (2)
38. St. Matthew's Church (old and new), Auckland (2)
45. Fairy Spring, Rotorua (1,2,3) *ILLUSTRATED page 15*
46. The Crater, Mt. Eden, Auckland, N.Z. (2)
48. Top of White Terrace, Lake Rotomahana (1,2)
63. The Hospital, Waihi (1,2)
68. Main Street Waihi looking towards Karangahake (2,3) *ILLUSTRATED page 15*
75. "Mohi", Maori Chief (2) *ILLUSTRATED page 15*
78. The Wharf, Rotorua Lake, showing Ngaruawahia Mountain (2)
101. Regatta Day, Cowes Bay, Waiheke. A Favourite Holiday Resort near Auckland. (2)
105. Okere Falls, at Electrical Power Station, near Rotorua (2)
123. The S.S."Oswestry Grange", on which Mr Seddon, the late N.Z.Premier, died at Sea, June10th 1906.(2)
124. The Recent Great Fire in Auckland. The City Chambers ablaze. (2) *ILLUSTRATED page 15*
153. YACHTING IN AUCKLAND HARBOUR, N.Z. (3)
158. SCOWS, EARLY MORNING, AUCKLAND HARBOUR, N.Z. (3)
162. The "Bridge of Sighs", Ruakuri Caves, Waitomo, N.Z.(3)
164. Stalactites, Alexandra Grotto, Ruakuri Caves, Waitomo, N.Z. (3)
306. DUNEDIN N.Z. PANORAMIC VIEW FROM TOWN HALL CLOCK (3)
316. THE TELEGRAPH OFFICE, SHOWING HIGH STREET IN THE DISTANCE, DUNEDIN N.Z.(3) *ILLUSTRATED page 15*
324. ROMAN CATHOLIC CATHEDRAL AND CONVENT DUNEDIN N.Z.
327. A CORNER OF THE FERNERY, BOTANICAL GARDEN, DUNEDIN, N.Z.(3)
330. THE OCTAGON SHOWING REV. BURN'S MONUMENT AND TOWN HALL DUNEDIN N.Z.(3)
331. PANORAMIC VIEW OF INVERCARGILL N.Z. FROM TOWER OF POST OFFICE (3)
336. DUNEDIN N.Z. PANORAMIC VIEW FROM TOWN HALL CLOCK SHOWING HARBOUR ETC. (3)
346. St. Peter's Anglican Church, Onehunga. (2)

### B UNNUMBERED COROMANDEL PENINSULA CARDS

- (18) No.1 Panoramic Series: Waihi Township
- (19) The Gorge, Karangahake

### C "A", "R", & "B" COLOURED 'MOA' SERIES (PRINTED BY RÖDER).

It can be confirmed that A.2 is the same view as B & W No.14, and R.5 is the same as No.50.

### D REAL PHOTO CARDS WITH "PROTECTED" COPYRIGHT DATE (type of back in brackets, - see THE POSTCARD PILLAR No. 58)

1. 2. 1908 TRAIN ASCENDING THE SPIRAL AT RAURIMU (A)
1. 2. 1908 THE SPIRAL (Note: same as 'Moa' series No. 6010) (A)
1. 3. 1908 NO.2 PANARAMIC VIEW OF TAIHAPE (A) (Note spelling error "A" for "O")
1. 3. 1908 NO.3 PANAROMIC VIEW OF TAIHAPE (A) (Note: spelling error, - should be "PANORAMIC"!)
1. 3. 1908 AT MAKATOTE (A)
1. 6. 1908 MAKATOTE VIADUCT (A)
1. 7. 1908 THE SKEW BRIDGE (A)
1. 7. 1908 TAUMARUNUI - SHOWING ONGARUI & WANGANUI RIVERS (A) (Note: spelling error, - should be "ONGARUE")



9. 8. 1908 NO.3 U.S.A. BATTLESHIP OHIO (A) (Note: what other U.S. Fleet ships exist in this series?)  
 1. 1. 1909 A PEEP ON THE SPIRAL (A)  
 1. 1. 1909 TAUMARUNUI, SHOWING RAILWAY STATION (C)  
 1. 2. 1909 HAUTAPU RIVER - TAIHAPE (A)  
 1. 2. 1909 MAIN ST. TAIHAPE (A)  
 6. 6. 1909 A CALM MORNING, AUCKLAND HARBOUR  
 6. 6. 1909 MOUNT. EDEN, AUCKLAND  
 10.8.1909 No.1 STATION YARD OHAKUNE (D)  
 20.8.1909 No.1 PANAROMIC VIEW OF WINTER, OHAKUNE STATION YARD (D) (Note: spelling error)  
 20.8.1909 THE STRAND ARCADE FIRE AT ITS HIGHT (D) (Note: spelling error)  
 1. 10.1909 NEW BRIDGE FROM GRAFTON ROAD (D)  
 1. 11.1909 N.I.M.T. RAILWAY - THE STATION YARD, OHAKUNE (D)  
 1. 11.1909 No.1. TAIHAPE - SOUTH-BOUND EXPRESS ENTERING RLY. STATION (D)  
 1. 11.1909 No.6. TAUMARUNUI, A PEEP THROUGH THE TREES (C)  
 1. 1. 1910 No.21. MAORI SECTION, MUSEUM, AUCKLAND (C)  
 1. 1. 1910 THE GREAT BLOW HOLE, FRYING PAN FLAT, WAIMANGU, ROTORUA (C)  
 1. 1. 1910 WAIMANGU GEYSER IN ACTION, ROTORUA  
 20.4. 1910 No.2. GRAFTON BRIDGE  
 26.12.1910 No.23 PANN<sub>o</sub> THE BAY FROM MANSION HOUSE, KAWAU  
 26.12.1910 No.25 PANN<sub>o</sub> THE BAY FROM MANSION HOUSE, KAWAU  
 (Note: "PANN<sub>o</sub>" is apparently Beattie's idiosyncratic abbreviation of "PANORAMA"; -  
 he had great difficulty spelling the word correctly!)  
 1. 1. 1911 CHELTENHAM BEACH, AUCKLAND (C)  
 1. 1. 1911 No.5 MAIN BATH HOUSE, GOVERNMENT SNATORIUM GROUNDS, ROTORUA (C) (Note:  
 spelling error)  
 1. 1. 1911 No.6. WAIROA GEYSER IN ACTION, WHAKAREWAREWA, ROTORUA (C)  
 1. 6. 1911 BISHOP'S MITRE, ARANUI CAVES, WAITOMO (C)  
 11.8. 1911 AT HUNTLY RAILWAY STATION, ARRIVAL OF EXPRESS (C)  
 1. 10.1911 MANUNUI, FROM THE HILLS, NEAR TAUMARUNUI (C)  
 1. 10.1911 TAUMARUNUI, FROM ABOVE RANGAROA (C)  
 1. 11.1911 No.2. GENERAL VIEW, WHAKAREWAREWA, ROTORUA (C)  
 1. 11.1911 No.2. PANAROMIC VIEW OF TAUMARUNUI (C) (Note: spelling error)  
 1. 11.1911 No.2. MT. EGMONT - TARANAKI'S LONELY SENTINEL (C)  
 1. 11.1911 No.4. THE LAKE, RECREATION GROUNDS, NEW PLYMOUTH (C)  
 1. 11.1911 THE SQUARE, PALMERSTON NORTH, THE EXPRESS PASSING THROUGH (C)  
 11.12.1911 QUEEN ST., SHOWING POST OFFICE, AUCKLAND (C)  
 14.12.1911 OFFICIAL OPENING OF TOWN HALL AUCKLAND BY HIS EXCELLENCY THE GOVERNOR (C)  
 1. 1. 1912 SECTIONAL VIEW OF WATER FRONT, AUCKLAND (C)  
 1. 6. 1912 No.107. AT DEVONPORT, SHOWING AUCKLAND (C)  
 1. 7. 1912 AUCKLAND HARBOUR, SHOWING NORTH SHORE & RANGITOTO (C)  
 1. 7. 1912 TOP ONE TREE HILL (MAUNGAKIEKIE), SHOWING RANGITOTO, AUCKLAND (C)  
 1. 9. 1912 CREEK SCENE NEAR MAUNGATUROTO  
 1. 9. 1912 MID-DAY EXPRESS LEAVING AUCKLAND RAILY. STATION (C)  
 1. 9. 1912 THE CRATER PEAK, 800FT. HIGH, WHITE ISLAND (C)  
 1. 9. 1912 THE GUARDIAN OF WHITE ISLD. (C)  
 1. 9. 1912 No.123. THE GREAT BLOWHOLE, WHITE ISD. (C)  
 1. 10.1912 BOILING CAULDRON. WHAKAREWAREWA (C)  
 1. 12.1912 "ALL SAINTS CHURCH", PONSONBY, AUCKLAND (C)  
 1. 12.1912 No.1. IN THE WESTERN PARK, PONSONBY, AUCKLAND (C)  
 1. 12.1912 QUEEN ST. SHOWING POST OFFICE & WIRELESS INSTALLATION AUCKLAND (C)  
 1. 12.1912 QUEEN ST. SHOWING TOWN HALL, AUCKLAND (C)  
 1. 1. 1913 STEAMING HILLS & BOILING WATER, LAKE ROTOMAHANA, ROTORUA (C)  
 1. 3. 1913 No.1. PUBLIC SCHOOL & C PUKEKOHE (C)  
 1. 3. 1913 No.2. "METHODIST CHURCH" & SCHOOL, PUKEKOHE (C)  
 20.5. 1913 TAUMARUNUI - FROM THE HILLS, SHOWING ONGARUI RIVER IN FOREGROUND  
 1. 9. 1913 HOT SPRINGS HOTEL. NO.15. WAIWERA, NEAR AUCKLAND (blank back)  
 1. 9. 1913 VIEW FROM MT. EDEN, SHOWING TIRI TIRI, RANGITOTO - EXTINCT VOLCANO - ENTRANCE  
 TO HARBOUR, NORTH SHORE, NEWMARKET & EXHIBITION BUILDINGS, AUCKLAND (C)  
 1. 9. 1913 VIEW OF ETRANCE TO HARBOUR, FROM MT. HOBSON, AUCKLAND (C) (Note: spelling  
 error)  
 1. 6. 1915 THE QUEEN'S WHARF, AUCKLAND (C)



24.8. 1915 BOUND FOR TRENTHAM - DEPARTURE OF 8TH DRAFT REINFORCEMENTS  
1. 10.1915 ONE TREE HILL FROM ST. JOHN  
(unlisted type of back: "POST CARD" above "Correspondence Address" only).  
(Note: This is the latest copyright date recorded so far on a William Beattie card).

#### E REAL PHOTO CARDS WITHOUT COPYRIGHT DATE

- (A) A LITTLE PAKHEA-MAORI (Note: spelling error - should be "PAKEHA")
- (B) DREAMLAND ROAD, WAITAKERI RANGE, NIHOTUPU (C) (Note: spelling error "I" for "E")
- (C) KING GEORGE V HOSPITAL, PUKEROA HILL, FROM SUNKEN PA, OHINEMUTU, ROTORUA (C)
- (D) MAIL COACH CROSSING SULPHUR CREEK (A)
- (E) MAORI CHURCH, OHINEMUTU, ROTORUA (C)
- (F) MT. RUAPEHU AND ACCOMODATION HOUSE WAIOURU N.Z. (Note: spelling error "M" for "MM")
- (G) NGAURUHOE VOLCANO IN VIOLENT ERUPTION (C,D)  
(Note: Also exists with 10.4.1909 copyright date and as B&W "Moa" Series printed version)
- (H) PONSONBY NO.1. N.Z. CHAMPION DRUM & FIFE BAND: WINNER 5. QUICK STEP 1. SELECTION (C)  
(Note: different from similar card previously recorded)
- (I) R.M.S.NIAGARA (C)
- (J) ROMAN CATHOLIC CHURCH, TAIHAPE (A)
- (K) THE BRAIN POT WHAKAREWAREWA (blank back)
- (L) NO.8. THE FERRY BUILDINGS, AUCKLAND (C)
- (M) THE LAWN - "IRUNGA" - PRIVATE RESIDENTIAL HOTEL, WAITAKERI RANGES, NIHOTUPU (Note: spelling errors, - should be RESIDENTIAL and WAITAKERE)

#### F REAL PHOTO CARDS PRODUCED FOR OTHER PUBLISHERS

- (A) NO.2. PAERATA BEACH OPOTIKI. A.S. DALGETTY, OPOTIKI (no date) (C)
- (B) METHODIST CHURCH, MANUREWA. G.A. ROBERTSON (no date)
- (C) CARVED MAORI HOUSE, TE KUITI. F.S. SUTTON, TE KUITI (no date)

#### COMMENTARY

We have now managed to identify most of the early scenes in Beattie's catalogue numbered below 100, - only 9 remain to be identified. Of the numbers up to No. 389 in the main printed series, we have still to identify the following:

4, 9, 12, 15, 28, 40, 44, 49, 73, 113, 117, 125-6, 128-135, 137-147, 149-151, 155, 161, 169, 172-3, 179, 182-3, 187-299 (no cards may have been published in this sequence), 310, 312, 314, 323, 338, 341, 344, 349, 351, 352, 354-9, 361, 363-8, 370, 372, 375, 376, 378, 379, 381, 383-7.

Can anyone help? Once we have succeeded in identifying most of the scenes for the Nos. listed up to 389, we intend to publish a complete consecutive list, to be made available to anyone interested.

For the following numbers, we have established that Beattie later replaced his original photo with another, slightly different, of the same scene, We would like to hear of other examples of this practice. Those known are: Nos. 10, 25, 31, 68, 77.

There are two apparent numbering errors:

- a) One early B&W printing of No.59 ("Wairoa Geyser in action, Whakarewarewa") is wrongly numbered "46" (which properly belongs to "The Crater, Mt. Eden, Auckland, N.Z."). Another early B&W printing No.59 has the number shown correctly.
- b) Earlier, we speculated that the apparent number "111" accompanying "WAIMANGU GEYSER" (in eruption) may be a misprint and intended to be some other number. We still believe this. A possibility is "117", which has not yet been identified. Another view with "111" is "The Basin, Waimangu Geyser". We believe this was the intended no. 111 in the catalogue.

Alan Jackson

---

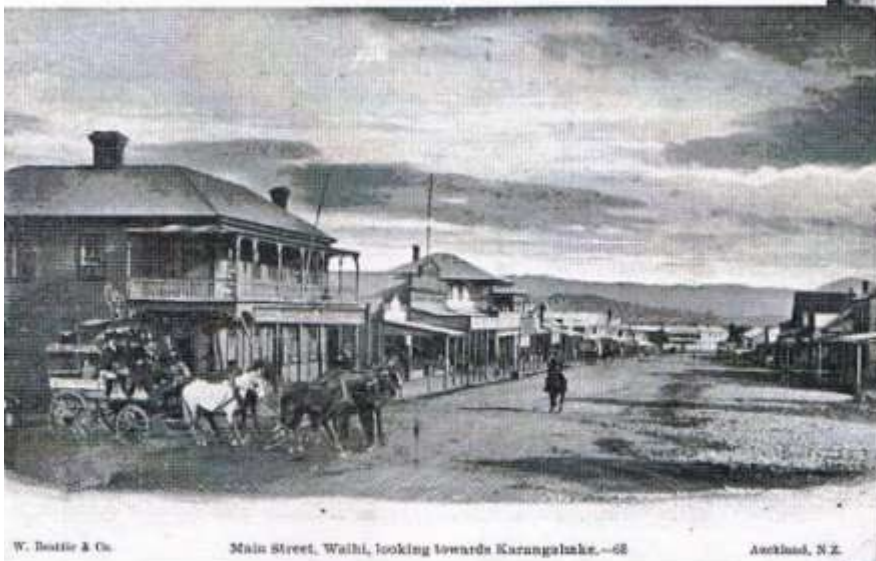




LEGISLATIVE OFFICE, SHOWING POSITION OF THE DISTANCE, DENYING IT.



"Mohi" Maori Chief. - 75  
W. Duttie & Co., Publishers. Auckland, N.Z.



W. Duttie & Co. Main Street, Waihi, looking towards Karangahake. - 68 Auckland, N.Z.



W. Duttie & Co., Publishers. The Dairy Farming, Rotorua. - 45 Auckland, N.Z.



The Recent Great Fire in Auckland. The City Chambers ablaze. - 124  
W. Duttie & Co., Publishers. Auckland, N.Z.